

Cambridge
International
AS & A Level

Cambridge International Examinations
Cambridge International Advanced Subsidiary and Advanced Level

GEOGRAPHY

9696/31

Paper 3 Advanced Human Options

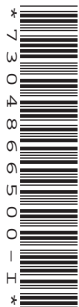
May/June 2017

INSERT

1 hour 30 minutes

READ THESE INSTRUCTIONS FIRST

This Insert contains the Table, Photograph and all the Figures referred to in the questions.



This document consists of **5** printed pages and **3** blank pages.

Table 1 for Question 1**Global changes in area of arable land and area of irrigated land, 1970 and 2012**

	1970	2012
area of arable land (million hectares)	1420	1620
area of irrigated land (million hectares)	184	324
area of arable land needed to feed one person (hectares)	0.45	0.22

Increase in world agricultural productivity during the same period: 175%.

3

Photograph A for Question 3**A maize field and a biofuel refinery in France, an MEDC in Europe**

Fig. 1 for Question 5

Pattern of trade for Japan, an MEDC in Asia, 2012

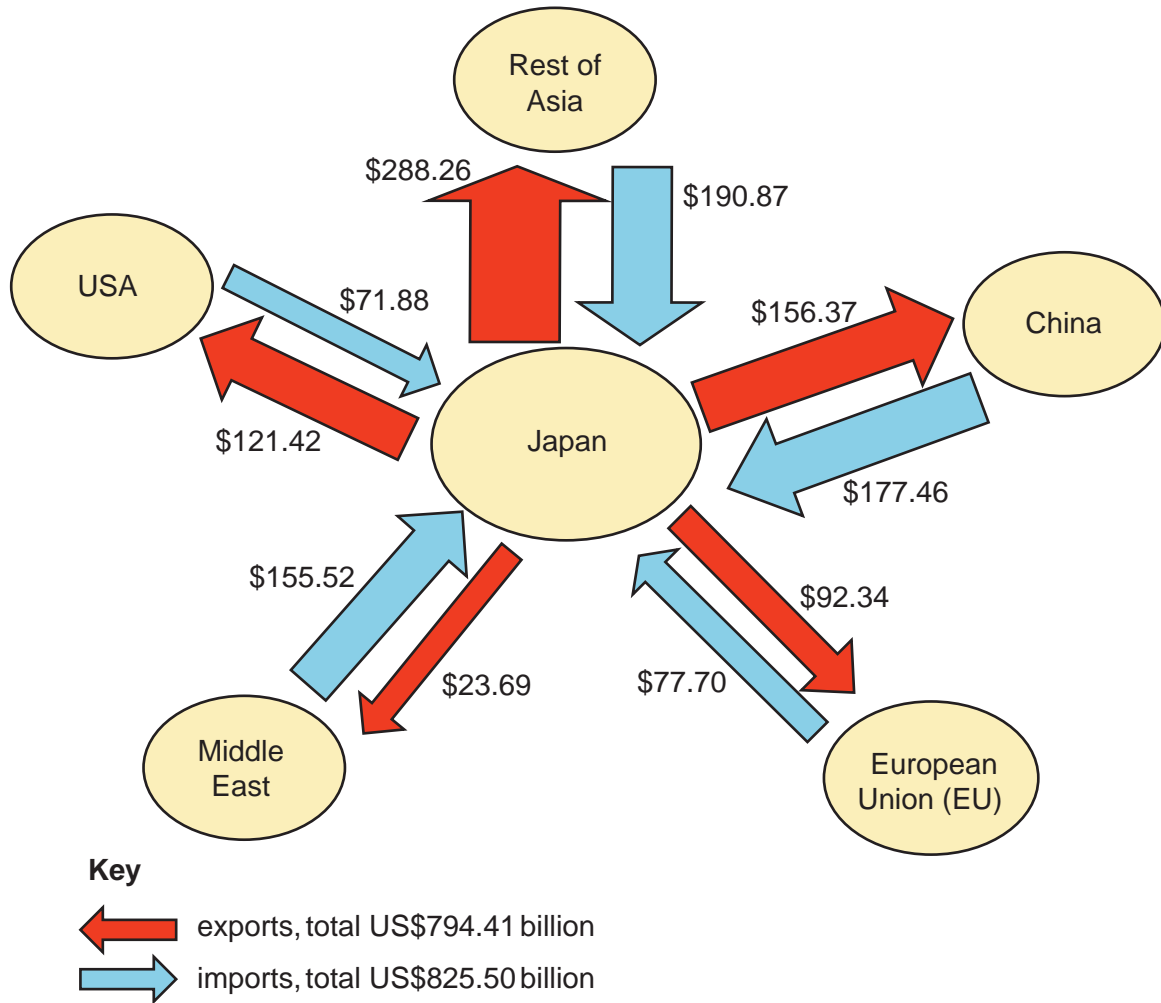
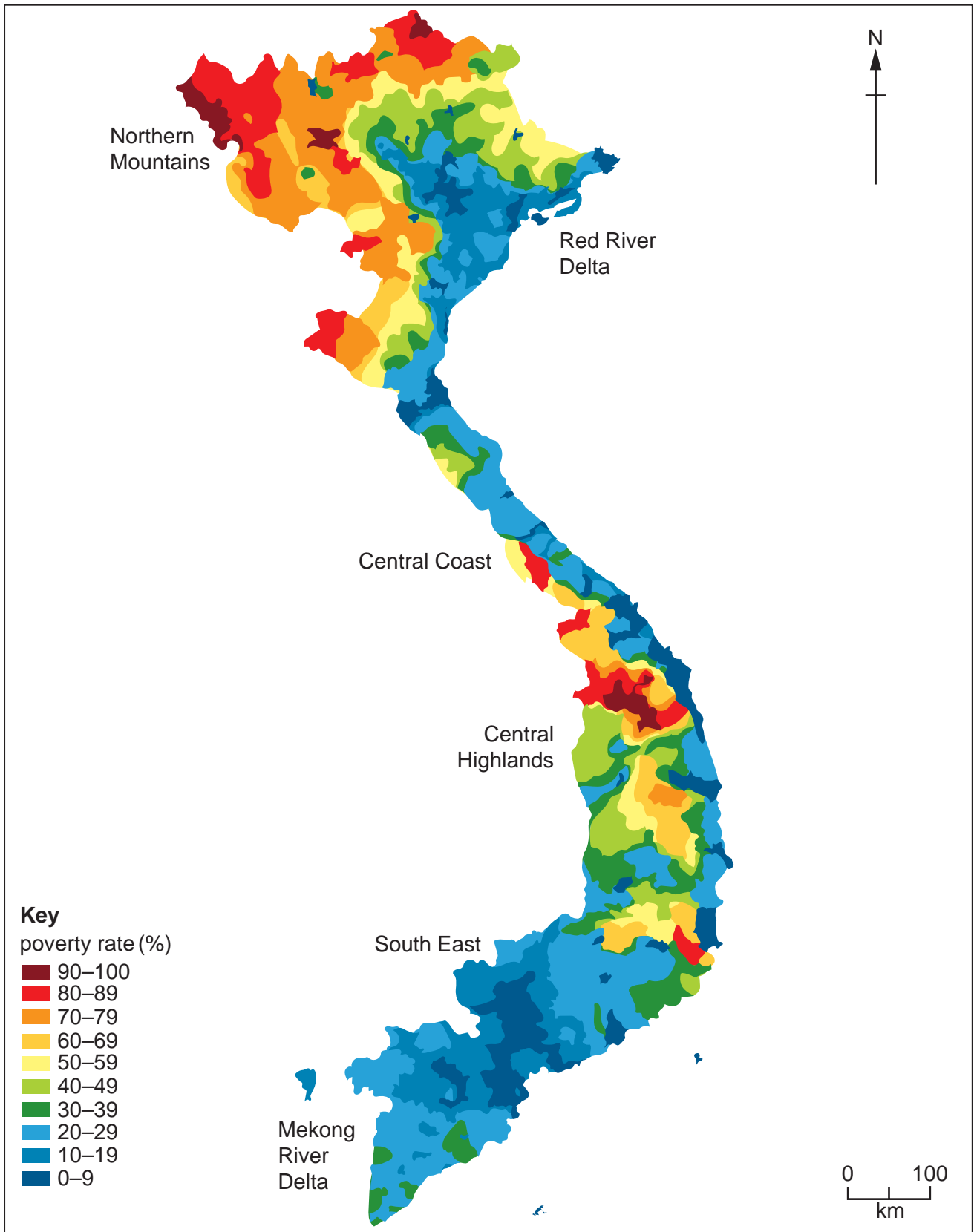


Fig. 2 for Question 8

Poverty in Vietnam, an NIC in Southeast Asia, 2009



BLANK PAGE

BLANK PAGE

BLANK PAGE

Permission to reproduce items where third-party owned material protected by copyright is included has been sought and cleared where possible. Every reasonable effort has been made by the publisher (UCLES) to trace copyright holders, but if any items requiring clearance have unwittingly been included, the publisher will be pleased to make amends at the earliest possible opportunity.

To avoid the issue of disclosure of answer-related information to candidates, all copyright acknowledgements are reproduced online in the Cambridge International Examinations Copyright Acknowledgements Booklet. This is produced for each series of examinations and is freely available to download at www.cie.org.uk after the live examination series.

Cambridge International Examinations is part of the Cambridge Assessment Group. Cambridge Assessment is the brand name of University of Cambridge Local Examinations Syndicate (UCLES), which is itself a department of the University of Cambridge.